

NOTES:

1. VERIFY EQUIPMENT ORIENTATION PRIOR TO INSTALLATION OF BOX PAD.
2. LOOP EACH CABLE COMPLETELY AROUND INTERIOR OF BOX PAD.
3. INSTALL BELL ENDS ON THE END OF ALL CONDUITS.
4. INSTALL 6" OF PEA GRAVEL BELOW BOX PAD.
5. ENSURE ELBOWS ARE IN A POSITION WHERE WIRE CAN BE PULLED THROUGH AND NOT SCRAPE ON BOX PAD.
6. ENSURE ELBOWS RISE 3" ABOVE PEA STONE.
7. MARKING TAPE TO BE USED WHEN TRENCHING, NOT REQUIRED FOR DIRECTIONAL BORE.

ITEM	QTY	MATERIAL
Uza	1	Box pad, fiberglass or concrete
Uzb		Conduit sweeps, as req'd
Uzc		Conduit bell ends as req'd

ENG.	AGC
CHK.	RS
APP.	AGC

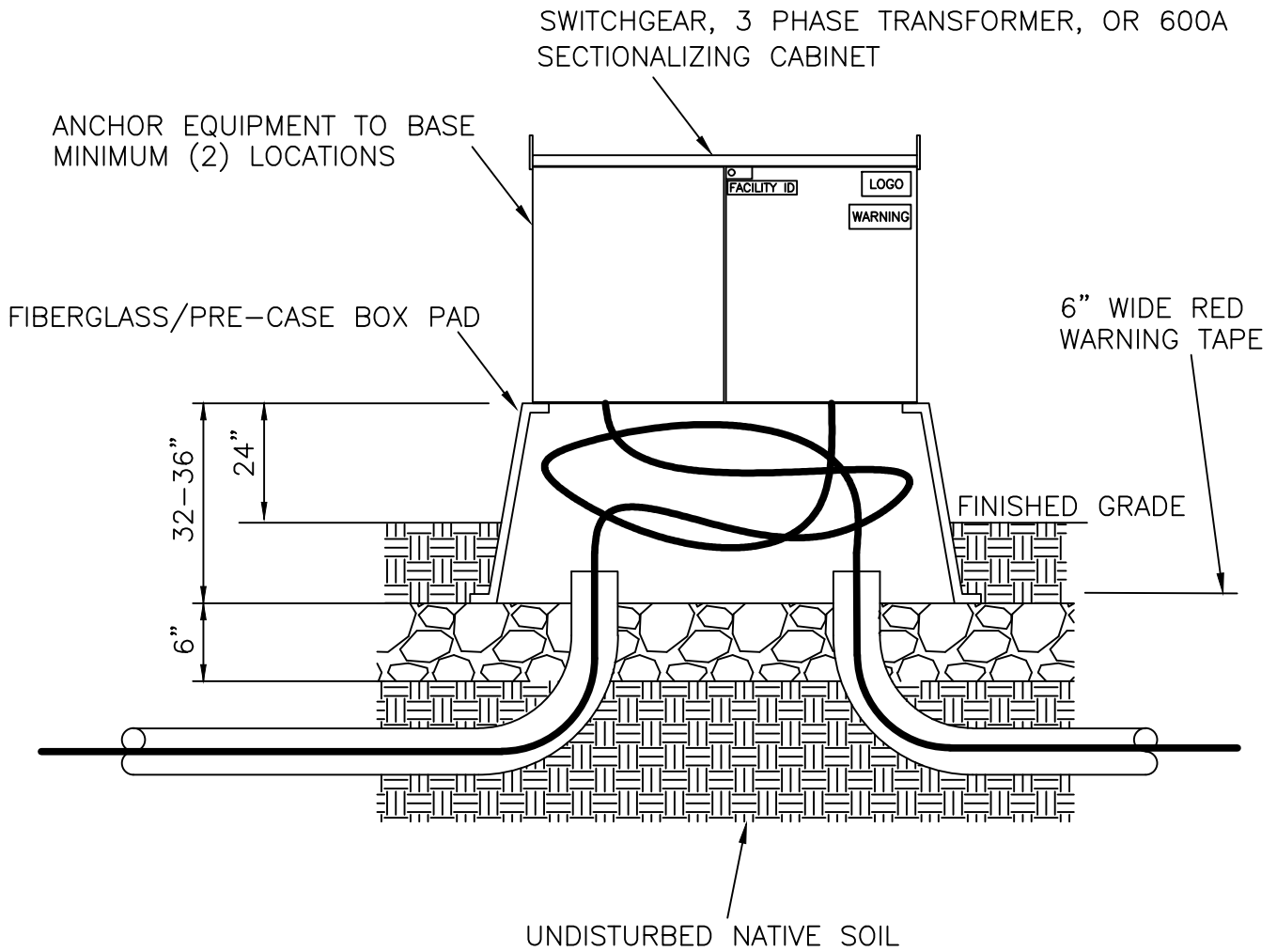
SHALLOW BOXPAD INSTALLATION

OCT 2018



1 - PHASE PRIMARY
13.8/7.97 kV

UM1-4NC



NOTES:

1. VERIFY EQUIPMENT ORIENTATION PRIOR TO INSTALLATION OF BOX PAD.
2. LOOP EACH CABLE COMPLETELY AROUND INTERIOR OF BOX PAD.
3. INSTALL BELL ENDS ON THE END OF ALL CONDUITS.
4. INSTALL 6" OF PEA GRAVEL BELOW BOX PAD.
5. ENSURE ELBOWS ARE IN A POSITION WHERE WIRE CAN BE PULLED THROUGH AND NOT SCRAPE ON BOX PAD.
6. ENSURE ELBOWS RISE 3" ABOVE PEA STONE.
7. MARKING TAPE TO BE USED WHEN TRENCHING, NOT REQUIRED FOR DIRECTIONAL BORE.

ITEM	QTY	MATERIAL
Uza	1	Box pad, fiberglass or concrete
Uzb		Conduit sweeps, as req'd
Uzc		Conduit bell ends as req'd

ENG.	AGC
CHK.	RS
APP.	AGC

DEEP BOXPAD INSTALLATION

OCT 2018



1 - PHASE PRIMARY
13.8/7.97 kV

UM1-5NC